

# HIGH-TEMPERATURE PREFILTER TYPE DUO SAFE HT

viledon®

MAXIMUM SAFETY IN CRITICAL AREAS

FILTER TYPE	FILTER CLASS TO ISO 16890	FILTER CLASS TO EN 779:2012
Duo Safe HT 10	ISO ePM10 75%	M 6



## The application

The Viledon® Duo Safe HT 10 is mainly used for air filtration in the recirculation units of paint drying processes in the automotive industry. The Duo Safe HT filter is particularly suitable for use in highly critical and heavily loaded HT systems where conventional, single-stage filters allow relatively short service lives only (e.g. in filter stages with a high amount of condensate or in critical, tin-bearing electro coatings).

The filters meet particularly high requirements in terms of air purity, process reliability and cost-effectiveness.

## The special features and benefits

- The Duo Safe HT filter is combined with a HiTemp cassette filter, with recessed pleat pack. The prefilter can be changed several times during heavy loading without the need for time-consuming replacement of the HiTemp main filter. The upstream filter stage significantly extends the service life of the main filter and thus enables more economical operation.
- The filter medium of the prefilter is micro-glass-fiber paper folded using minipleat technology, which protects the downstream HiTemp filter in the event of heavy soiling.

- The uncomplicated replacement of the prefilter means that the filter can be changed much more quickly, saving time and money.

## The extras

- The prefilter is attached to the frame of the main filter by 4 metal latches and can quickly be changed without tools.
- In addition to the main filter dimensions of 592×592×292 mm, the combination is also available in the dimensions 610×610×292 mm.

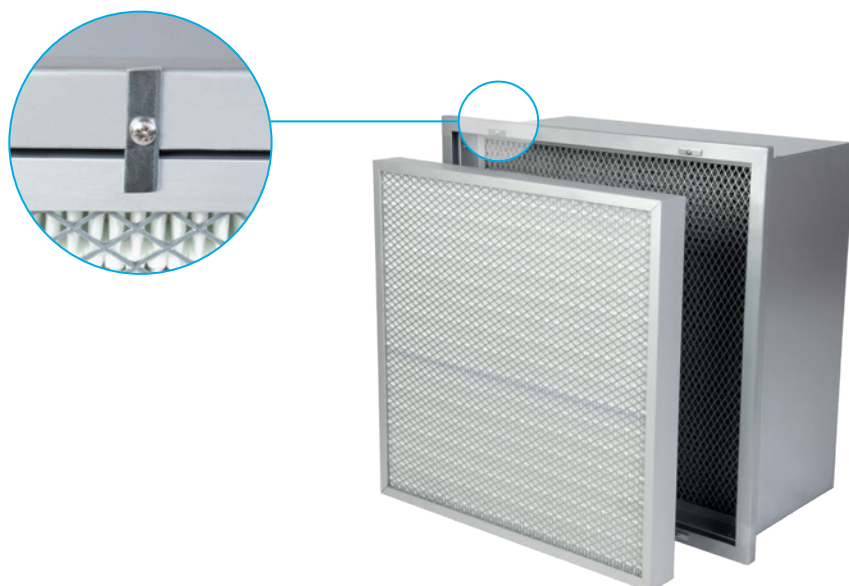
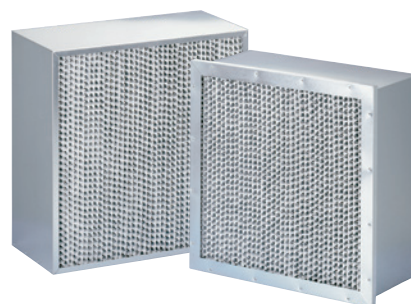
GEOMETRIES AVAILABLE	DUO SAFE HT	HT 10-SA-0538×0538×55-U-L-PRE-BBA	
	HITEMP	HT 10-HG-0592×0592×292-2-L-REC-BBA	HT 2.5-HG-0592×0592×292-2-L-REC-BBA
Nominal volume flow rate	m³/h	3,400	
Dimensions	mm	592×592	
Overall depth	mm	292	
Weight, approx.	kg	3 + 12 = 15	
Filtering area, approx.	m²	4.6 + 9.5 = 14.1	
Temperature stability	°C	260	

## TECHNICAL FILTER TEST DATA TO EN 779 AND ISO 16890

KEY DATA	DUO SAFE HT	HT 10-SA-0538×0538×55-U-L-PRE-BBA	
	HITEMP	HT 10-HG-0592×0592×292-2-L-REC-BBA	HT 2.5-HG-0592×0592×292-2-L-REC-BBA
Nominal volume flow rate	m³/h	3,400	
Initial pressure drop	Pa	190	200
Class to ISO 16890		ISO ePM10 85%	ISO ePM2,5 95%
Particulate matter efficiency			
ISO ePM1		59	89
ISO ePM2,5	%	78	96
ISO ePM10		89	98
Cut-off particle size	µm	8	4
Filter class to EN 779:2012		M6+M6	M6+F9
Recom. final pressure drop	Pa	450	

### DUO SAFE HT 10 FILTERS CAN BE COMBINED WITH

FILTER TYPE	FILTER CLASS TO ISO 16890	FILTER CLASS TO EN 779:2012
HT 10	ISO ePM10 75%	M 6
HT 2.5	ISO ePM2,5 75%	F 8



4 metal latches on the frame of the main filter allow the prefilter to be changed without tools.

The figures given are mean values subject to tolerances due to normal production fluctuations. Our explicit written confirmation is always required for the correctness and applicability of the information involved in any particular case. Subject to technical alterations.